



# How to Add **AirMAX BLE** to **DryLINK®**

## QUICK START GUIDE

### SETUP

Thank you for purchasing a Phoenix AirMAX BLE. Please follow these steps to properly add your new AirMAX to your DryLINK® App. For a more information on DryLINK and the entire Ecosystem, visit [www.usephoenix.com/phoenix-drylink-mobile-app/](http://www.usephoenix.com/phoenix-drylink-mobile-app/).

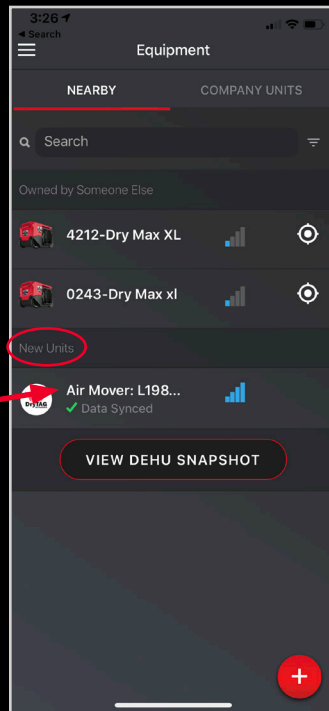


Scan QR Code for more information.

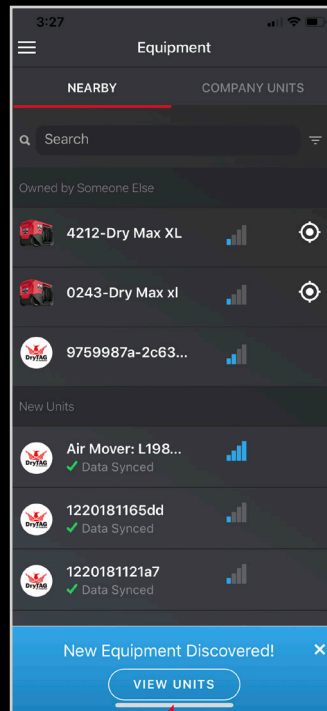


After receiving your AirMAX BLE, please log into the Phoenix DryLINK app to claim the unit and associate it with your company. If you do not have the DryLINK app, it is a free download from the App Store or the Google Play Store.

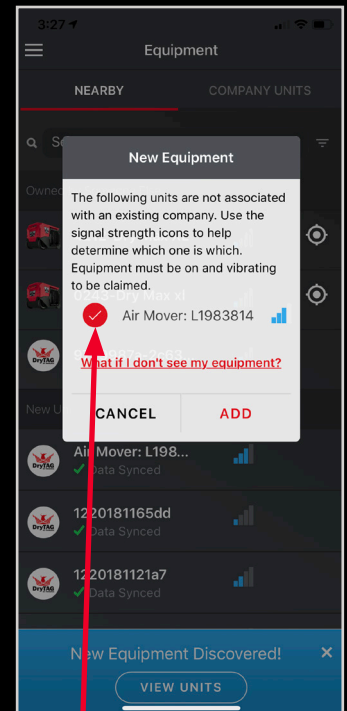
To claim the unit, turn on your AirMAX BLE. If it is not powered, it will appear like this in the app and it will show up under “New Units”.



When the AirMAX BLE is not running, the Bluetooth beacon sends out new information every minute. When it is running it sends it every 10 seconds.



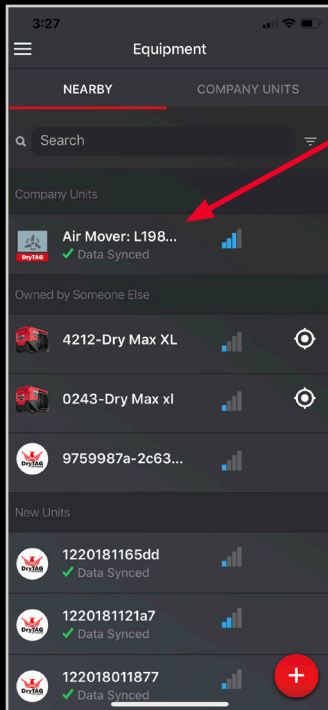
When you plug the unit in for the first time and open your DryLINK app you will see a blue bar like this at the bottom of your app.



Clicking the blue bar will display this a pop up screen. Make sure you have selected the serial number of the unit corresponding to your AirMAX.

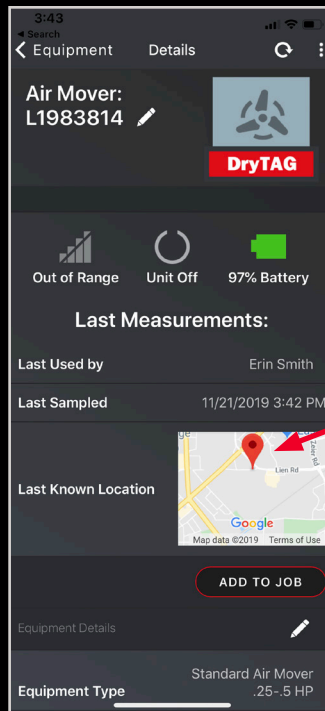
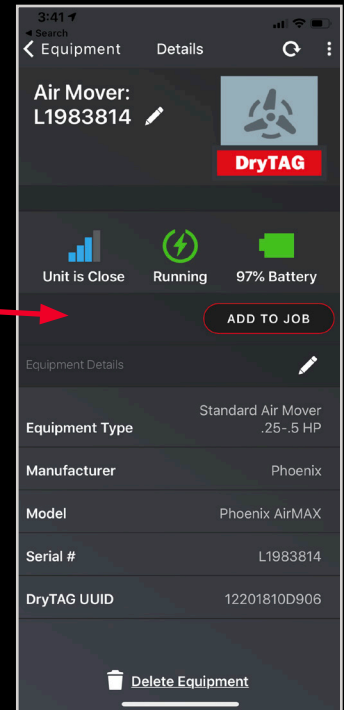
# How to Add **AirMAX BLE** to **DryLINK®**

## QUICK START GUIDE



Once you have claimed your AirMAX BLE, it will appear in the “Company Units” section.

When you click on the unit to go into the equipment details page and the unit is within Bluetooth range, it will look like this.



If you are not in Bluetooth range, the equipment details page will appear as shown. When the unit is not in Bluetooth range, a map of its last known location will appear.